



# children's autism

September 2019

Kia ora!

September is shaping up to be an action-packed month at Children's Autism Foundation!

Join us and show your support at our

***Holey Moley Mini Golf Day of Fun Tues 10th Sept***

See below for full details on this super fun, family event. All proceeds donated to Children's Autism Foundation!

Read on for details on **upcoming workshops, Group Outreach** and our continuing ASK (Autism Spectrum Knowledge) workshop series for professionals.

If you have any queries, require support or just a listening ear, drop us an email or give us a call on 09 415 7406. We are always here to help!

***from the Team at Children's Autism Foundation***

## Outreach Family Support

Our team will be across South Auckland in September and November, providing Outreach support to families/whanau. Book a one-hour Outreach appointment with one of our Family Consultants or share a coffee & conversation about autism with other families/whanau at our Small Group Outreach sessions:

**Small Group Outreach - Social & Friendship Skills - 9th Sept, Otara 11am to 1pm**

[More info and registration here](#)

**Outreach Appointments - 24th September, Otahuhu**

Book a one-hour appointment with one of our friendly, experienced Family Consultants

[More info and booking here](#)

**Small Group Outreach - Play & Communication - 7th Nov, Manurewa 10am to 12 noon**

[More info and registration here](#)

**Outreach Appointments - 21st November, Manurewa**

Book a one-hour appointment with one of our friendly, experienced Family Consultants

[More info and booking here](#)



## Our Workshops & Training

[CLICK HERE](#) for upcoming events

### A.S.K

Autism Spectrum Knowledge  
Professional training  
Educating our educators  
Tell your school about ASK now!

[More info](#)

---

## Transitions, post schooling options

**For students with a disability**  
Hosted by **Disability Connect** and presented by Lisa Martin

### South Auckland

Wednesday 25th September 7-9pm

### Central Auckland

Tuesday 22nd October 12-2pm

### West Auckland

Wednesday 13th November 7-9pm

### Central Auckland

Thursday 28th November 7-9pm

Email:

[admin@disabilityconnect.org.nz](mailto:admin@disabilityconnect.org.nz)  
for more information and registrations

---

## Warkworth Support Group

*Support group for families/whanau in Warkworth/Rodney*

Hosted by CAF Family Consultant Gera Verheul

Once per month on a Monday  
[Email us](#) for more info and next meeting date/time

---

## CAN YOU SUPPORT CHILDREN'S AUTISM FOUNDATION?

Donate to Children's Autism Foundation and every cent will go directly to supporting children with autism and their families. We are a small, lean team making a huge and positive impact in the lives of many. Many of our services are delivered

## Upcoming workshops!!!

[Register now](#) to save a space in one of our popular workshops.

Fun, interactive workshops facilitated by trained and experienced autism professionals



\$30 for families, \$50 for professionals

### Understanding Autism - 17th September Mt Wellington, 7-9pm [Register here](#)

- What is Autism Spectrum Disorder?
- The strengths & challenges of a child with ASD
- General strategies & tips to support a child with ASD

### Change & Transitions - 12th November Manurewa, 7-9pm [Register here](#)

- Daily transitioning (at home & school)
- Transitioning through life - moving to a new school, home or stage of life
- Strategies to support change

If you are not already subscribed to receive our newsletters and workshop info [click here](#) or follow us on [Facebook](#)

## ASK (Autism Spectrum Knowledge) workshops for professionals

ASK (Autism Spectrum Knowledge) training is a series of interactive professional development workshops, aimed at furthering participants' understanding of autism. Our next module "Social & Communication Skills" on **Monday 21st October**.



The 2-hour workshops are tailored to meet the needs of teachers, carers, support workers, social workers and any other professionals engaging with children with ASD. If you are working with a child or young person with ASD then these workshops are for you!

**Venue: The Long Room, Freeman's Bay Community Centre**  
**2 modules left in 2020! - Social & Communication Skills, Strategies for Behaviour**

More information and registrations [here](#)

## Holey Moley Day of Fun!

Come along and support Children's Autism Foundation at Holey Moley Mini Golf's Day of Fun!

**All proceeds from the day will be donated to Children's Autism Foundation to enable us to support even more families!**

**Holey Moley Mini Golf**  
**204 Quay St (opposite Maritime Museum)**  
**Tuesday 10th September (that's next week!)**

Play a round of super fun mini golf for just \$2 (normally \$16!), enjoy a sausage sizzle or indulge your sugar

at no cost to the family so even the smallest donation will make a difference in the life of a New Zealand child.

Support Children's Autism Foundation [here](#)

### Minds for Minds

Minds for Minds was established to enable parents and families to better understand how minds affected by autism spectrum disorder work. Under the Minds for Minds banner, researchers and clinicians work together to better understand autism spectrum disorder.

Keep up with latest Minds for Minds happenings by subscribing to their newsletter [here](#) or follow them on [Facebook](#)

### Useful Websites

[www.autism.org.nz](http://www.autism.org.nz)  
Children's Autism Foundation

[www.autismnz.org.nz](http://www.autismnz.org.nz)  
Autism New Zealand  
Support, information and education on Autism Spectrum Disorder

[www.adhd.org.nz](http://www.adhd.org.nz)  
ADHD Association

[www.altogetherautism.org.nz](http://www.altogetherautism.org.nz)  
Altogether Autism

[www.aucklanddyspraxia.org.nz](http://www.aucklanddyspraxia.org.nz)  
Dyspraxia Association

[www.ccsdisabilityaction.org.nz](http://www.ccsdisabilityaction.org.nz)  
CCS Disability Action

[www.dancetherapy.co.nz](http://www.dancetherapy.co.nz)  
Dance Therapy

[www.disabilityconnect.org.nz](http://www.disabilityconnect.org.nz)  
Disability Connect  
Support groups  
& disability related seminars

[www.enrichplus.org.nz](http://www.enrichplus.org.nz)  
Enrich+  
Education, Employment,  
Empowerment

[www.ihc.org.nz](http://www.ihc.org.nz)  
Idea Services  
Library & info services

[www.mapurastudios.org.nz](http://www.mapurastudios.org.nz)  
Mapura Studios  
Art Group for Teens

[www.parenttoparent.org.nz](http://www.parenttoparent.org.nz)  
Supporting parents & caregivers  
of children with disabilities

[www.phab.org.nz](http://www.phab.org.nz)  
Weekly social experiences  
for young people with disabilities  
16+

[www.taikura.org.nz](http://www.taikura.org.nz)

cravings with a sweet treat from the bake sale. Raffles and spot prizes will be happening through the event which runs from 12 noon through to 11pm.

Pop along with the kids after school or make it a fun date night - the bar will be open!

Check out our [Facebook event](#) for more info



(NASC Auckland)

[www.talklink.org.nz](http://www.talklink.org.nz)  
Talklink Trust

[www.wandersearch.org.nz](http://www.wandersearch.org.nz)  
WanderSearch NZ

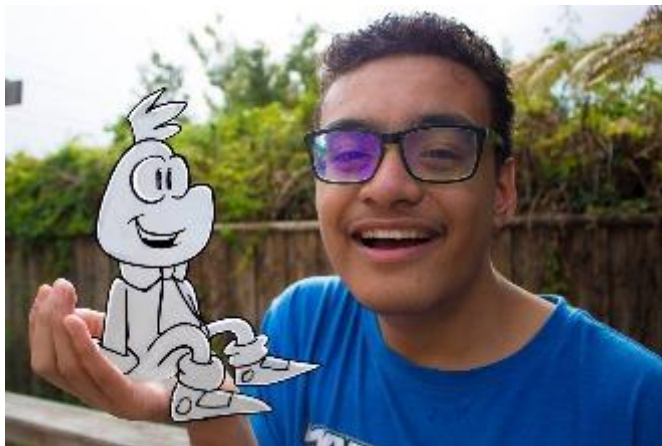
[www.yesdisability.org.nz](http://www.yesdisability.org.nz)  
Yes Disability

---

## Meet Munch Jr

Take a few minutes to enjoy this positive and inspiring video sent to us by an Auckland family.

[https://loadingdocs.net/meetmunchjr/?fbclid=IwAR2M41AmYoo4Xw-hX6sHU1MXf6\\_RZwy8lp7kGXKS7tHS2piafzd7jBJAts](https://loadingdocs.net/meetmunchjr/?fbclid=IwAR2M41AmYoo4Xw-hX6sHU1MXf6_RZwy8lp7kGXKS7tHS2piafzd7jBJAts)



## Children's Autism Foundation

Email: [enquiry@autism.org.nz](mailto:enquiry@autism.org.nz)  
Telephone: 09 415 7406  
Office hours: 9am - 3pm Monday, Wednesday, Thursday

Postal:  
PO Box 301 220  
Albany 0752  
Auckland

Unsubscribe me please

Brought to you by outreach**crm**